

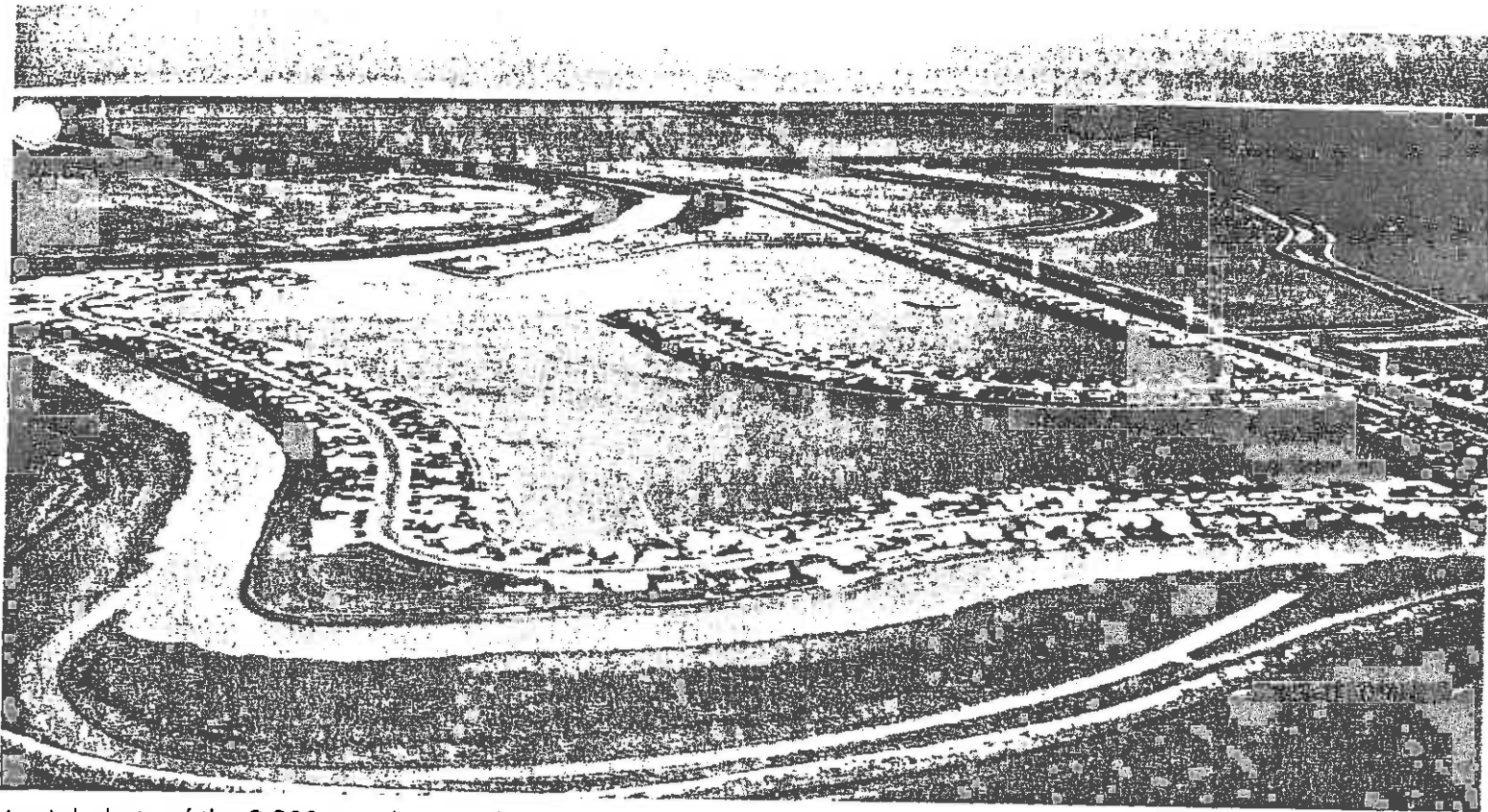
**A NEW COMMUNITY
ON MAGNIFICENT DEEP CHANNEL WATERWAYS
FOR YEAR-ROUND VACATION LIVING!**



There's adventure in living at Bel-Marin Keys
for a treasure isle is provided for
the pleasure of the residents.
Homeowners and their guests can
"escape from it all" and swim,
water ski, paddle, sail or cruise to this oasis
located in one of the
deep waterway lagoons. Picnic,
barbecue facilities and a
community bandstand are incorporated in
the island atmosphere.....

Bel/Marin  *Keys*

**Fox
&
CARSKADON**
EXCLUSIVE AGENTS
104 Caribe Isle - 883-7873
Novato California



Aerial photo of the 2,200 acre lagoon development at Bel-Marin Keys in Marin County

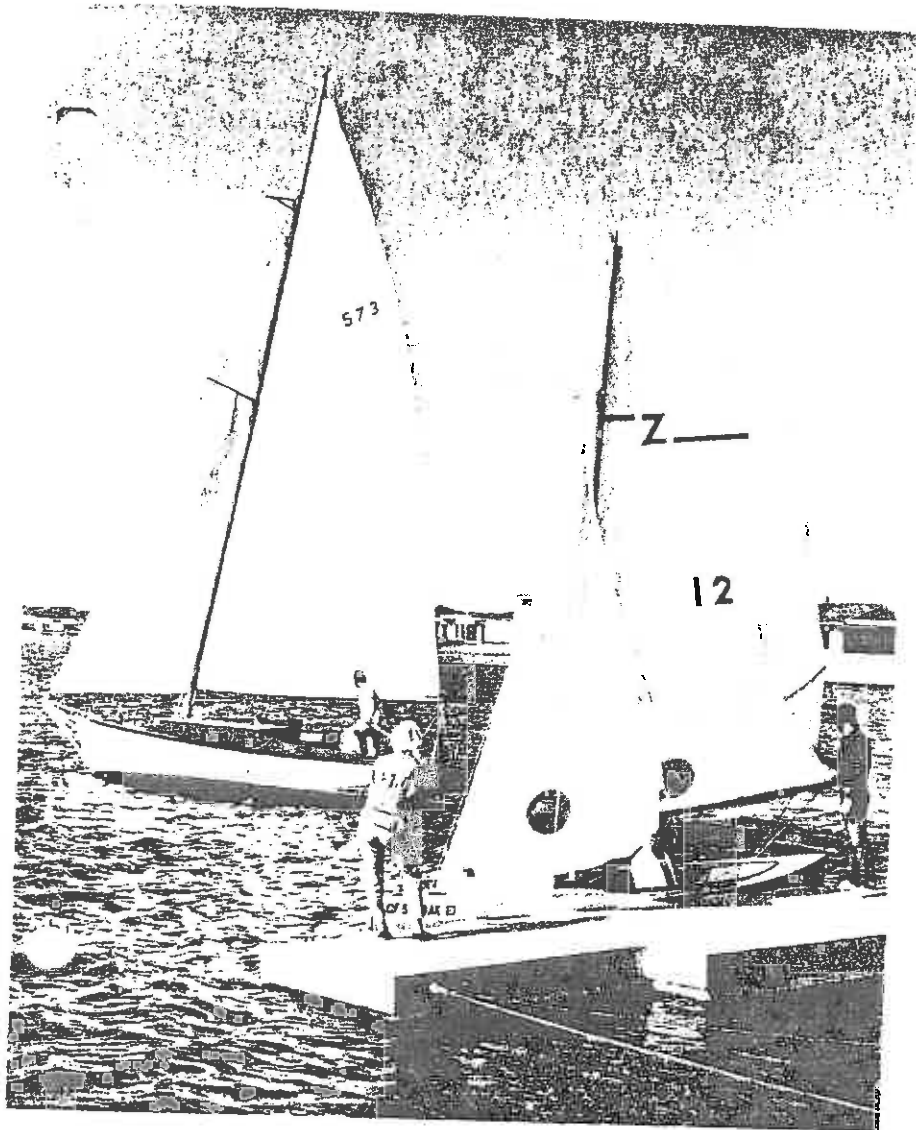
which will ultimately house 12,000 people. It provides direct deep water access to the waters of the bay — or deep sea fish from your own dock.

Bel-Marin Keys was formerly the historical Marin Meadows Ranch, and is in easy access to the entire Bay area.

Bel-Marin Keys is located one mile north of Hamilton AFB on Highway 101. From San Francisco, turn off 1 mile north of Hamilton AFB at Ignacio. From Santa Rosa area, turn off 1 mile south of Junction of Highways 37 and 101 (the Black Point cut-off) at Hamilton AFB overpass

sales office phone — 883-7873

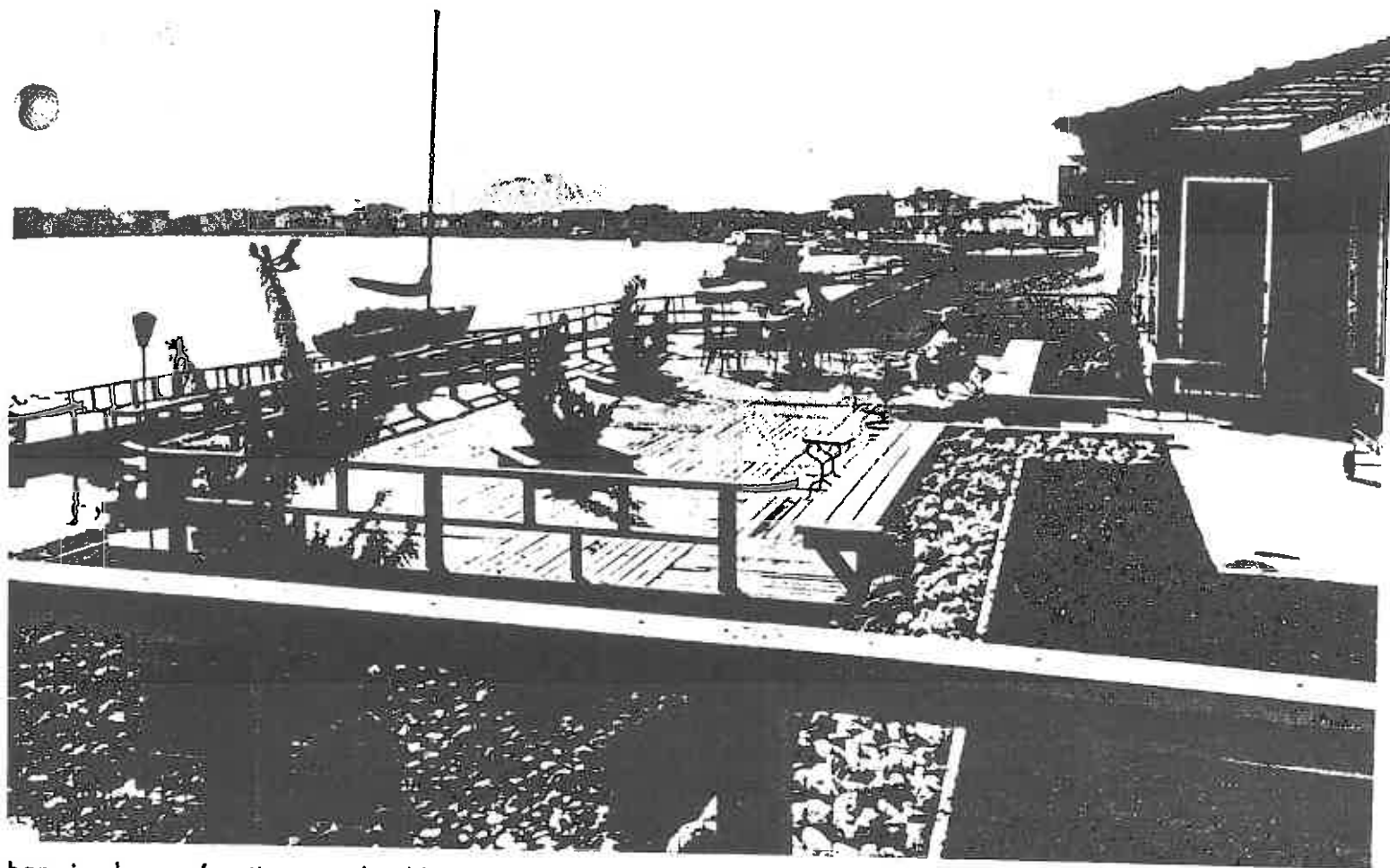




Sailing is a favorite sport at Bel-Marín Keys in Marin County. Most every homeowner has a cruiser or sailboat tied up at the dock at his own front door. The 2,200 acre development of lagoon waterways leads via deep channel to the sea. Sunny skies where you can relax, swim, water ski, fish or sail in your leisure time makes living in Bel-Marín Keys a day-to-day pleasure.



There's zest to water-skiing for children and adults at Bel-Marín Keys. Miles of inland waterways – the narrowest is 600 feet wide – provide thrills unlimited for lovers of this active sport – a mecca for water ski events. If you like to enjoy life here's the place to live.....where there's ideal weather and plenty of recreational opportunities.....



Charming homes fronting on inland lagoons that lead to the sea are only one of the attractions in living in Bel-Marine Keys. Residents are fun and play around each day on magnificent deep channel waterways. Shown is a typical Bel-Marine Keys patio and deck overlooking the panorama of the bay on one of the wide waterways that wind throughout Bel-Marine Keys to the great world of boating beyond.....

Bel-Marine Keys' homes reflect fastidious detail and excellent building construction.

Design of all homes has been done by outstanding architects. Individuality and good taste are the keynote of the area. Residents can choose homes to suit their own needs and to reflect their own personalities. Bel-Marine Keys' homes range from 3 to 4 bedrooms. Floor plans provide unlimited choice. Best of all, you can be assured of quality workmanship and of homes oriented towards the outdoor life where every day is a "vacation day".

